

 Roland



Adobe® PostScript® 3™



Macintosh client Setup Guide

This document describes that how to set up a Macintosh client to print using VersaWorks. For information about VersaWorks, please refer to the VersaWorks online help (Windows version) or the Quick Start Guide.

Roland DG Corporation

Setting up the Client Computer

The computer for creating image files is called a client computer.

In contrast to this, the computer where VersaWorks is installed and set up is called the raster image processor (RIP) server. Connecting the client to the RIP server over a network lets you send printing data from the client to the RIP server. In other words, you can use the RIP server as a printer for the client. You can also combine the RIP server and the client on a single computer.

When the client and the RIP server are different computers, you need to install a printer driver on the client. Follow the steps below to install the printer driver.

Macintosh Client

To send printing data to VersaWorks from a Macintosh client, you use VersaWorks's [AppleTalk Settings] feature.

Note, however, that this feature is available only for Windows 2000, and the AppleTalk Protocol must be installed and set up to use it. If you're using a Macintosh client, be sure to use a computer running Windows 2000 as the RIP server. It cannot be used with Windows XP.

For information on how to install the AppleTalk Protocol, refer to the documentation supplied with Windows 2000.

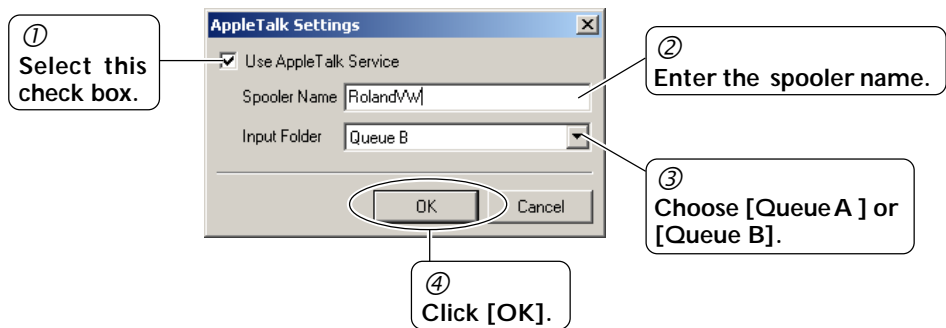
Setting up the RIP Server

1 Start VersaWorks.

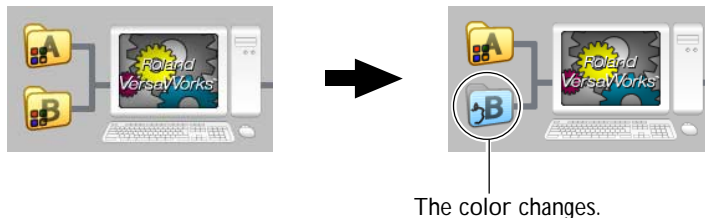
Choose [Edit], then click [AppleTalk Settings].

2 Make the settings for the spooler name and the input folder.

The spooler name becomes the name of the printer specified for the connection destination when you make the settings for the client.



The folder in the settings area that is specified for AppleTalk use changes color.



This completes the settings for the RIP server.

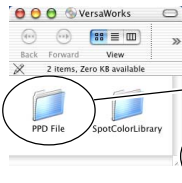
Setting up the Client Computer

Mac OS X

- 1 Make sure the RIP server is running, then insert the RolandVersaWorks CD-ROM in the computer's CD-ROM drive.
- 2 Copy the PPD file to the computer.



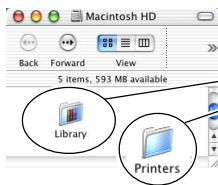
① Double-click the [VersaWorks] icon on the desktop.



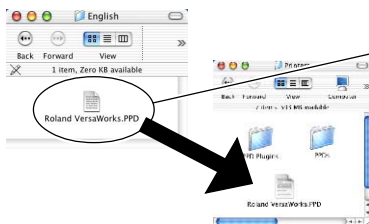
② Double-click [PPD File]-[English].



③ Double-click the icon for the hard disk used as the startup disk.



④ Double-click [Library]-[Printers].



⑤ From the [English] folder, drag the [RolandVersaWorks.PPD] file to the [Printer] folder.

Continued on the next page ➔

3 Register the printer for the spooler name you entered in "Setting up the RIP Server."

☞ p 3 "Setting up the RIP Server"

1 Double-click the icon for the hard disk used as the startup disk.

2 Double-click [Application]-[Utilities] folder, then double-click [Printer Setup Utilities]. The [Printer List] window appears.

3 Click [Add].

4 Choose [AppleTalk].

5 Choose the printer for the spooler name you entered in "Setting up the RIP Server."

6 Select [Other] in the [Printer Model] list.

7 Choose [Roland VersaWorks.PPD].

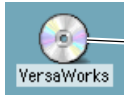
8 Click [Choose].

9 Click [Add].

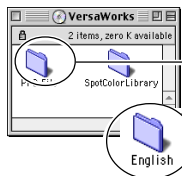
This completes the settings for the client. You can print from the program in the same way as with other printers.

Mac OS 9

- 1 Make sure the RIP server is running, then insert the Roland VersaWorks CD-ROM into the computer's CD-ROM drive.
- 2 Copy the PPD file to the computer.



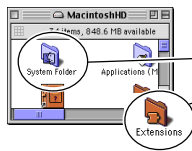
1 Double-click the VersaWorks icon on the desktop.



2 Double-click [PPD File]-[English].



3 Double-click the icon for the hard disk used as the startup disk.



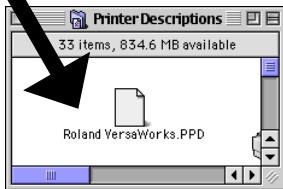
4 Double-click [System Folder]-[Extensions].



5 Double-click the [Printer Descriptions] folder.



6 From the [English] folder, drag the [Roland VersaWorks.PPD] file to the [Printer Descriptions] folder.



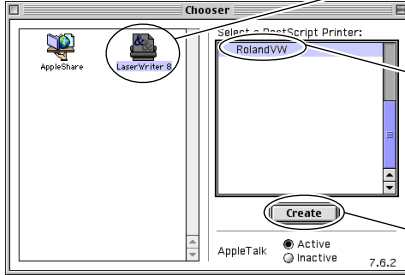
Continued on the next page ➤

3 Register the printer for the spooler name you entered in "Setting up the RIP Server."

☞ p 16 "Setting up the RIP Server"

1 From the Apple menu, choose [Chooser].

2 Click [LaserWriter 8].

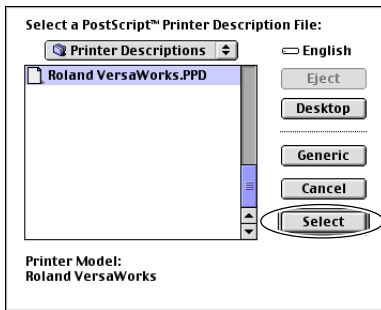


3 Choose the printer for the spooler name you entered in "Setting up the RIP Server."

4 Click [Create].

The printer is registered automatically.

4



If the window shown in the figure appears, select [Roland VersaWorks.PPD], then click [Select].

This completes the settings for the client. You can print from the program in the same way as with other printers.

