

Knowledge Base

MODEL: Roland VersaWorks	BULLETIN DATE: 3/8/05
BULLETIN NUMBER: FE-030805	AUTHOR: Sid Lambert
SUBJECT: Adobe Illustrator Contour Cut	REVISION: Initial Release

Adobe Illustrator CS Contour Cut

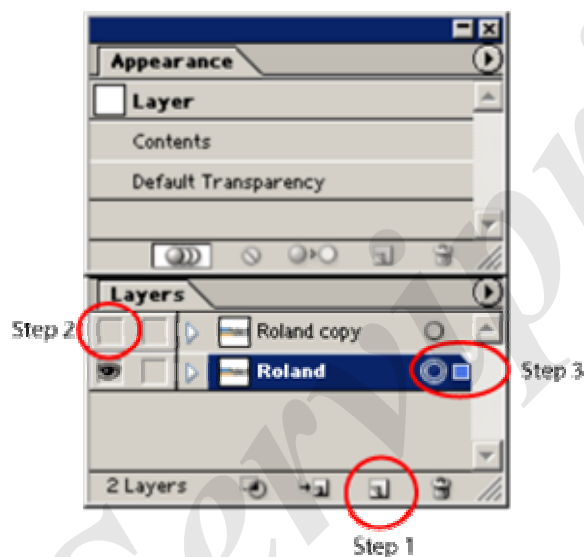
This document outlines the steps taken in order to perform a contour cut on a complex object.

Prerequisites:

- 1: Install the Roland VersaWorks swatch library in Illustrator. More information in Roland VersaWorks help dialog.
- 2: Open file containing your vector artwork.

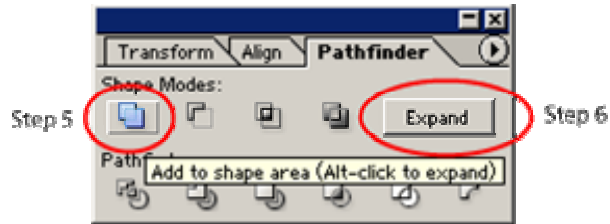
Creating the contour:

- 1: Create a copy of your artwork by dragging the layer to the "Create New Layer" icon.
- 2: Turn off visibility on the copied layer by clicking on the "eye".
- 3: Select the circle on the original layer to select all the contents of the layer.



- 4: Open the Pathfinder dialog box using "Shift + F9" keys.
- 5: Select "Add to Shape Area" in the Pathfinder dialog.
- 6: Select "Expand" in the Pathfinder dialog to change the shape to a path.

Built with precision. Backed with passion.

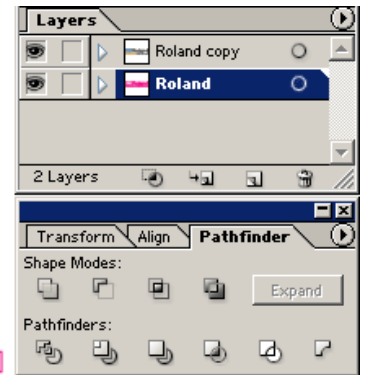


7: If you require an offset or a bleed on your contour cut go to “Object -> Path -> Offset Path” and change the values as required. If you do this you must delete the original object used to make the offset path or you will have 2 cut lines. Delete the inside line for offset and the outside line for inset.

8: Make sure you are using the correct color for your contour cut. It should be named CutContour and have no fill. A 1pt stroke is acceptable and will help you see the line.

9: Make your top layer visible again using Step 2 as a guide.

10: Save your file as .eps or .pdf in order for Roland VersaWorks to see the contour cut.



Built with precision. Backed with passion.